

# Current Land Use and Population Mission Beach and Surrounds

Petina Pert, Kristen Williams, Elaine Harding and Rosemary Hill

## Mission Beach today ...

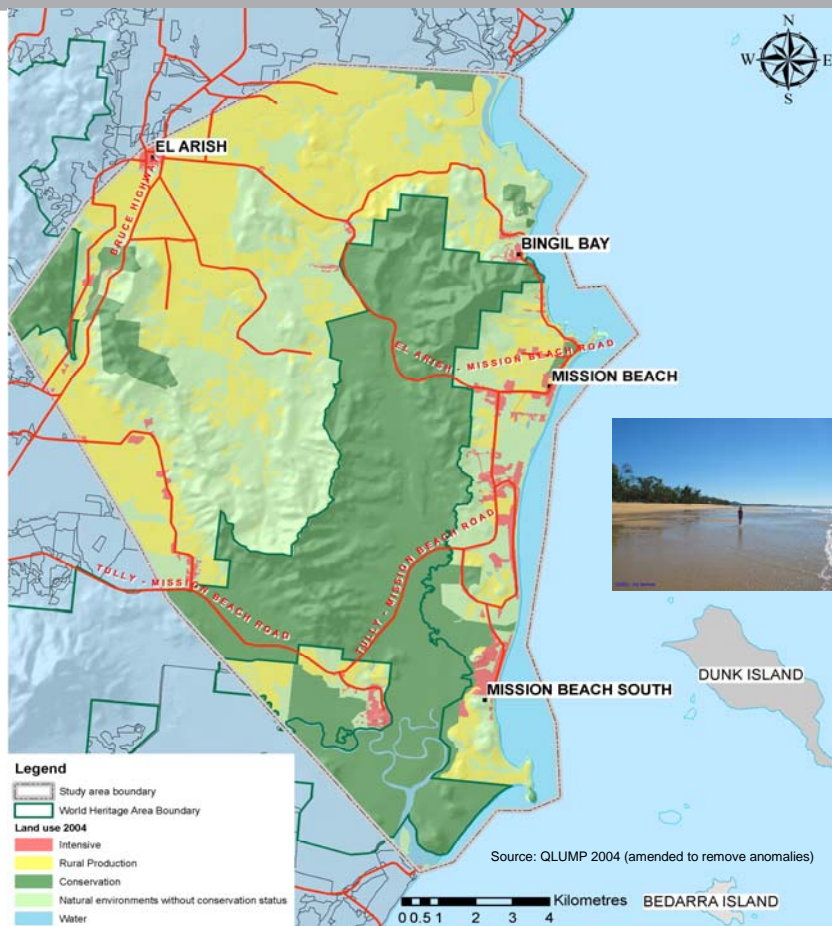
The relaxed beach lifestyle is under threat from increasing development pressures, as tourism and residential units vie for space within the narrow coastal belt of rainforest and wetland habitats. Tourist numbers have temporarily declined due to the actual and perceived impacts of Cyclone Larry on the area. Agriculture and tourism, the major players in the local economy, are beginning to recover from the impacts of the cyclone. However, longer-term trends indicate that employment in agriculture, forestry and fisheries is declining and jobs in tourism, retail, and construction industries are increasing.

Restoration plans are being formulated for creating green corridors to connect isolated fragments of remnant vegetation and to provide for improved connectivity of cassowary habitat. Djiru people are reconnecting to their traditional country, including through the management of the Clump Mountain Wilderness Camp. A significant proportion (37%) of the Mission Beach area has protected status (World Heritage Area and through private conservation covenants).

However, cassowary populations have declined due to the continuing loss and degradation of their lowland rainforest habitat and from cyclone-related impacts including the death of 15 adult cassowaries killed in an 18-month period. Traffic calming devices and a fauna underpass are being trialled on the Tully-Mission Beach Road in an attempt to reduce the high numbers of cassowary roadkills.

Areas with Conservation Status	Inside WHA <sup>9</sup>	Outside WHA <sup>9</sup>	TOTAL hectares	% of total study area
Nature Refuge <sup>1</sup>	0.0	14.4	14.4	0.05
Covenant <sup>2</sup>	0.0	168.1	168.1	0.69
Forest Reserve <sup>3</sup>	4.1	0.04	4.1	0.02
Reserve <sup>4</sup>	3.0	376.0	379.0	1.56
National Park <sup>5</sup>	7121.9	1156.7	8278.6	34.05
State Land <sup>6</sup>	0.1	242.6	242.7	0.99
State Forest <sup>7</sup>	2.2	0.0	2.2	0.01
Restored Land <sup>8</sup>	0.0	15.6	15.6	0.06
<b>TOTAL</b>	<b>7131.3</b>	<b>1973.4</b>	<b>9104.7</b>	<b>37.43</b>

Areas with Conservation Status Description and Data Sources
1. Nature Refuges are usually part of a parcel of land and result from a conservation agreement between the government and private land owner. Source: EPA (Sept 2007)
2. Covenant – A registered right or interest over a parcel of land that restricts its use to conservation. Source: DCDB (2006)
3. Forest Reserve – Tenure of an interim nature for a maximum of 5 years which is managed by for conservation while the long-term tenure is finalised. Source: Estates Version 12 (July 2007)
4. Reserve – Land reserved by the Department of Natural Resources and Water for community or public purposes. Source: DCDB (2006)
5. National Park – Land reserved by the EPA for a National Park, National Park (Scientific), Conservation Park or Resource Reserve. Source: Estates Version 12 (July 2007)
6. State Land – Land held by the State of Queensland as Unallocated or similar. Source: DCDB (2006)
7. State Forest – Land reserved by the Department of Natural Resources and Water (Resource Management) for State Forest purposes. Source: DCDB (2006)
8. Restored Land – Land restored to a more natural state with assistance from NHT grants provided to community groups up to 2002.
9. WHA – World Heritage Area boundary legally defined by the Wet Tropics Management Authority (WTMA). Source: WTMA (February 2006)



## POPULATION

- Resident population = 4103<sup>1</sup>
- Tourist population (per day in August) = 1646
- Tourist establishments<sup>2</sup> = 73

## KEY EMPLOYMENT<sup>3</sup>

- 17% Agriculture, Forestry & Fishing
- 12% Retail
- 11% Accommodation, Restaurants & Cafes
- 11% Construction
- 8% Manufacturing
- 7% Education

## TRAFFIC (vehicles per day)<sup>4</sup>

- Tully-Mission Beach Road = 3600
- El Arish-Mission Beach Road = 1400

## REGISTERED DOGS IN MISSION BEACH (estimate)<sup>5</sup> = 1957

## CASSOWARY UNDERPASSES

- One purpose built on Tully-Mission Beach Rd
- Two existing culverts on El Arish-Mission Beach Road

## CASSOWARY ROADKILL HOTSPOTS (birds/year)<sup>6</sup>

- All roads = 4.1
- South Mission Beach Road = 0.65
- Tully-Mission Beach Road = 1.9
- El Arish-Mission Beach Road = 1

Regional Ecosystems Biodiversity Status	Inside Areas with Conservation Status <sup>7</sup>	%	Outside Areas with Conservation Status <sup>7</sup>	%	TOTAL (ha)	% of entire study area
Endangered	1704	7	1501	6	3205	13
Of Concern	993	4	911	4	1904	8
Not of Concern	5618	23	3206	13	8824	37
<b>TOTAL</b>	<b>8315</b>	<b>34</b>	<b>5618</b>	<b>23</b>	<b>13933</b>	<b>58</b>

## References

- 1 = Calculated using the 2006 ABS Census data for usual residents in CCDs within the MB study area.
- 2 = Includes caravan parks, backpackers, bed & breakfasts, self-contained units and resorts. Source: Mission Beach Tourism, Inc - Market Research report by B. Fokke, 2005.
- 3 = % of employment in all MB CCDs from ABS Basic Community Profile 2006.
- 4 = T-MB Location is the Johnstone/Cardwell Shire boundary, EA/MB is dry season. DMR records provided by M. Goolson 2008.
- 5 = Based on the proportion of MB population to total Cardwell & Johnstone Shires population applied to registered dogs in Cardwell & Johnstone Shires.
- 6 = 1992-2006 data from EPA/OPWIS 2007 map of cassowary road deaths at Mission Beach.
- 7 = Conservation Status areas includes World Heritage Area, National Park, Nature Refuge, Covenant, State Forest, State Land, Forest Reserve and Reserve.

## Further information

contact: Dr Rosemary Hill  
phone: (07) 4042 1252  
email: ro.hill@csiro.au  
web: www.csiro.au/cse

www.csiro.au



Australian Government  
Department of the Environment  
and Water Resources

