

Smart cities



Years 3-4
Years 5-6



Groups of 3



15 minutes



Pens/paper
Island outlines
Counters, coins or tokens - all the same size (approx 1.5cm)

Student instructions

Place the mobile towers to get the best coverage on your island map, but also cost the least amount of money.

Island map



Towers

The counters represent the range of a mobile tower. Each tower costs \$500.



People

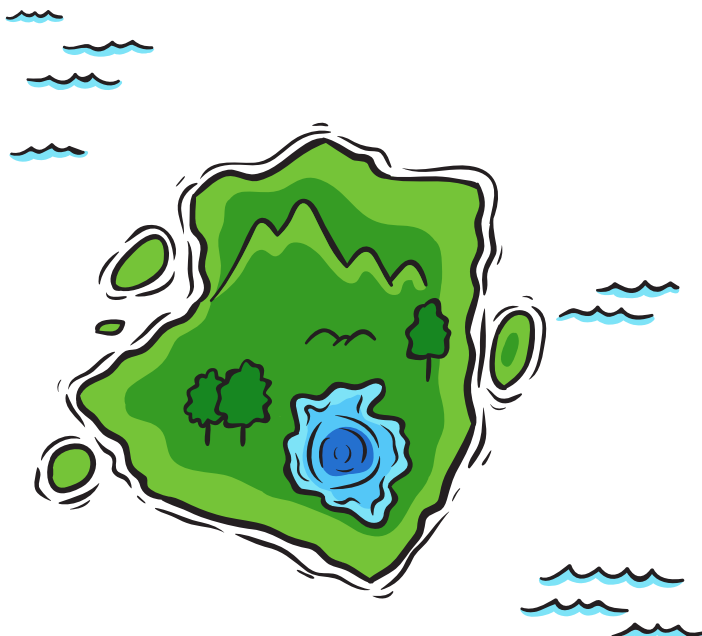
Randomly place 10 dots across the island. These dots represent people.



Cost efficiency

What is the best coverage you can get for the lowest price?

Does everyone on the island have coverage if there is an emergency?



Smart cities: extension

If this, then that: IFTTT

Some cities make their data available on the IFTTT platform, where people can set up alerts or cause a smart device to do something when a specific trigger occurs.



It might alert teachers, parents, students or other staff members of things that have happened at school. Sensors can be used to create the process.

Want to know more about smart cities?

Smart Cities are those that are connected via a network of sensors that alert town managers to changes, such as how full bins are, where open car parks are, and how dirty the air is on that day.

For more information and the latest news on smart cities, visit:

www.digitalcareers.csiro.au/links

Design a schedule of IFTTT to automate your school.

EXAMINE



PLAN



PRODUCE



EVALUATE

Submit your design to YICTE!

www.youngictexplorers.net.au