

Smart cities

Position mobile towers to maximise coverage across the islands while keeping costs as low as possible.



Years 5-6



Groups of 3



15 minutes

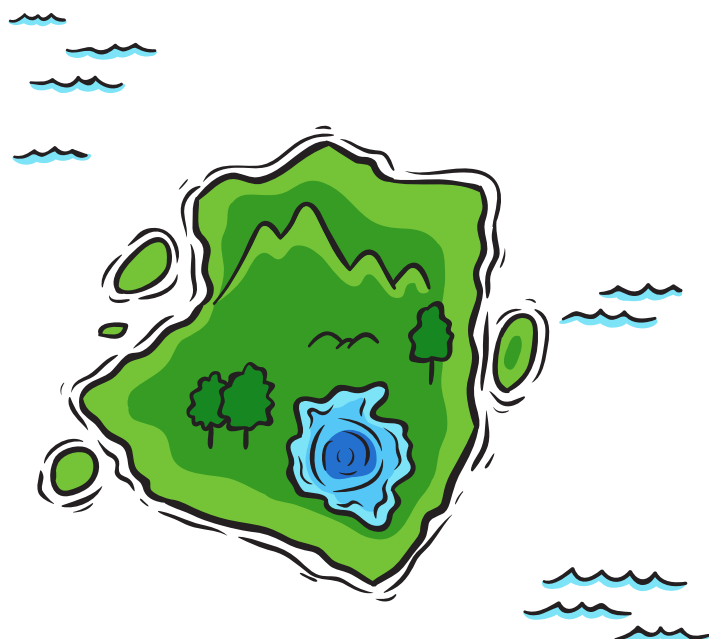


Pens/paper

Island handout

Counters, coins or tokens - all the same size (approx 1.5cm)

Island map



Student instructions

1. People

Randomly place 10 dots across the islands. These dots represent people



2. Towers

The counters represent the range of a mobile tower. Each tower costs \$500. Place counters to cover as many dots as possible. You can place a maximum of four towers.



3. Cost efficiency

Each tower costs \$500.

What is the cost per person?

Can we lower that cost?

Does everyone on the island/s have coverage in case of emergency?



Smart cities

Island map

