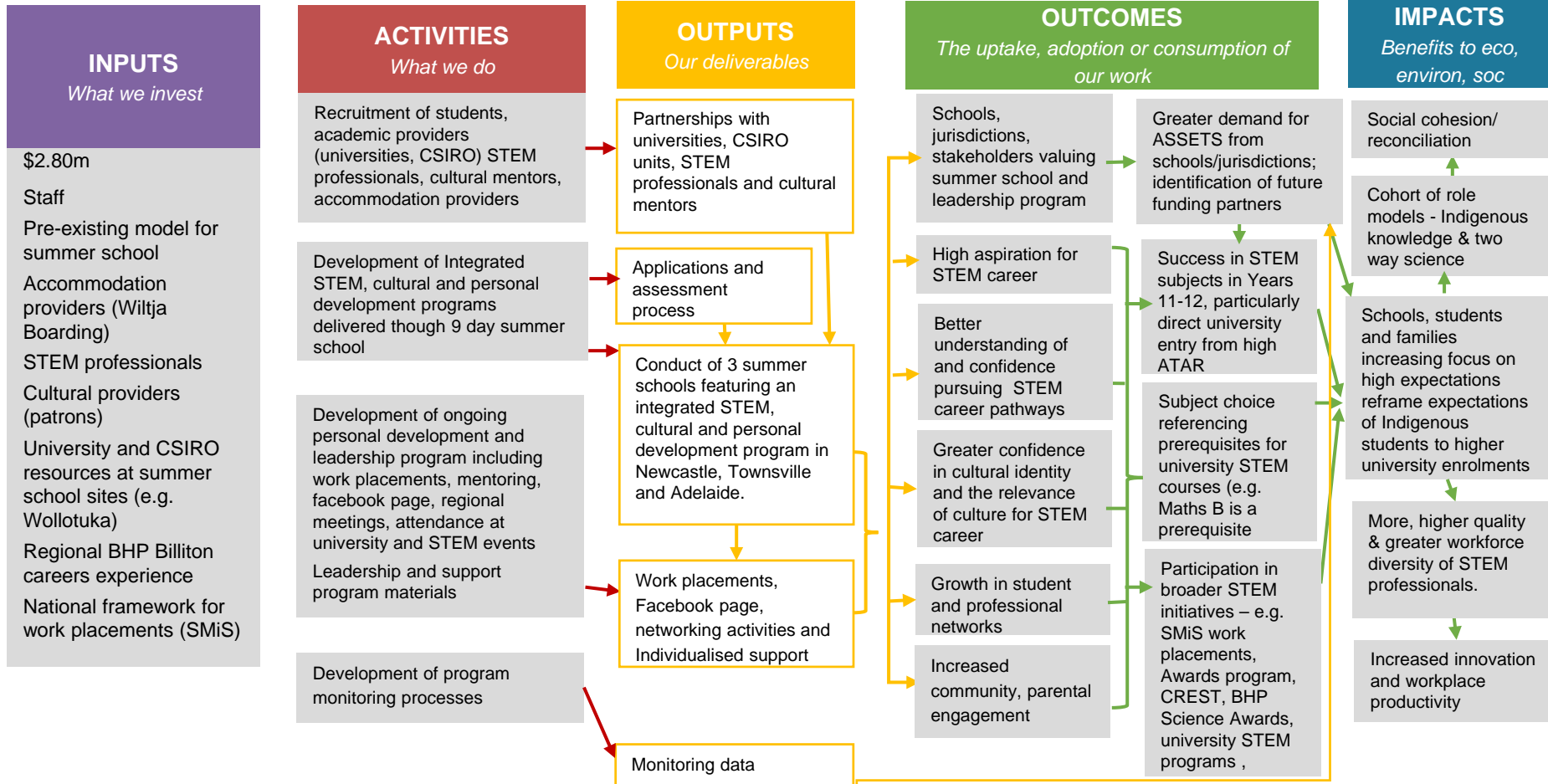


Impact Statement Canvas for Aboriginal Summer School for Excellence in Technology and Science (ASSETS)

PARTICIPATION: Cultural patrons, CSIRO +ASSETS Team Students, Schools, jurisdictions, SMiS Funding partners, SMiS
 Universities, Accommodation, STEM Professionals + Students, Families, Schools STEM workplaces and supervisors Universities, Students,



Assumptions

Integrating academic high expectations with culture and personal development is the best pathway to success.
 This program's primary focus on university pathways for STEM careers needs to accommodate possible alternate pathways.

External factors

Students may wish to do science in years 11 and 12 but the classes may be unavailable
 Some schools may not offer certain subjects
 Importance of school experience in influencing education outcomes